

COMMITTED TO QUALITY



ALL WEATHER
ARCHITECTURAL ALUMINUM

Enhance the way you experience the world around you



WELCOME TO ALL WEATHER

For over 50 years, and through 3 generations of family ownership, All Weather has hand crafted exceptional custom aluminum windows & doors. Utilizing the highest quality materials and applying the superior workmanship of true artisans, we have breathed life into thousands of building projects up and down the entire west coast and beyond.

Over the decades, All Weather's ability to provide creative solutions to challenging projects has been the company's cornerstone and continues to set All Weather apart from our competition.

We believe in service beyond expectation and we achieve this by listening to you. Whether this is your first project with us, or your 100th, our pledge remains the same: We are here to support you by providing expert product knowledge, a world-class customer service experience and on-time delivery of the best aluminum windows and doors on the planet.

Our desire is to foster deep, meaningful relationships as we grow and prosper together. We value you, your business and the opportunity to make each of your projects more amazing with our stunning windows and doors.

Welcome to All Weather, your commercial specialists.





ALL WEATHER CUSTOM WINDOWS

All Weather windows put an exquisite frame around the most important moments of your client's lives. Whether our products provide a view out onto a quad, the perfect spot to look out on the city, or a corner office awash in natural light, we build our exceptional custom windows with their memories in mind. Not only do All Weather Windows beautify your projects, they are also perfectly functional, energy efficient, and incredibly secure. It is our goal to provide you an experience that will help you match the ideal window to the design aesthetic you and your clients are working to achieve. On the following pages you will find our full line of window products with photos and information to help you visualize the possibilities of making beautiful custom windows a part of your next build.





SERIES 5000 | THE SONOMA

The Series 5000 is our most popular thermally broken window system. Utilizing a pour and de-bridge thermal break, the 5000 is the most cost-effective way to get an energy efficient custom window without sacrificing performance or aesthetics. With a multitude of frame options, this product is the perfect fit for almost any architectural application and is a breeze to install.

Our Series 5000 uses extruded, age-hardened aluminum that boasts a T-6 rating for strength and durability. This is a window built to last with a wall thickness that meets or exceeds even commercial window standards.

Economical, durable and beautiful, the Sonoma finds the sweet spot where functionality meets indulgence. You can just call it gorgeous practicality.

- | 2 1/4" frames with mitered corners
- | Exterior glazed
- | Thermally Broken
- | Fixed, casement, awning, hopper & combination configurations
- | Beveled bead available
- | TDL & SDL available

Information on colors, hardware, glazing, and performance ratings found on pages 18 - 28





SERIES 6000 | THE NAPA

When your project must be truly exceptional, the Series 6000 should be your window of choice.

The Series 6000 exterior glazed, architecturally rated window is the ultimate in quality and style. This state-of-the-art window is designed for maximum energy efficiency and supreme durability with looks & style that will impress and inspire.

As both the highest rated and most energy efficient product in the All Weather product line, the Napa is in a class of its own.

- | 2 1/2" frames with mitered corners
- | Exterior glazed
- | Thermally Broken
- | Fixed, casement and awning configurations

Information on colors, hardware, glazing, and performance ratings found on pages 18 - 28





ALL WEATHER CUSTOM DOORS

All Weather doors offer more than just a remarkable view. Our stunning products let your client's personal style shine through. They are beautiful, functional, energy efficient, and incredibly secure. Each custom door we produce, whether sliding, swinging or folding, becomes the portal that connects all those that walk through to the world around them. At All Weather it is our goal to craft each individual door to meet your vision of perfection, and to blur the lines between your indoor and outdoor spaces. On the following pages you will find a dream-book of sorts. Photos and information to help make effortlessly smooth, movable walls of glass a part of your next project.





SERIES 7000 | THE MENDOCINO

With the 7000 hinged door, structural excellence and the latest technology unite to keep your clients comfortable, safe and secure. Showcasing sublime European design, this magnificent door is perfectly suited for use in the most modern commercial architecture.

Our series 7000 doors ensure high thermal insulation performance, offer excellent acoustic insulation, water tightness, air tightness, and resistance to saline corrosion. With outstanding durability, energy savings, and a multi-point locking system, the Mendocino is the perfect fusion of unparalleled functionality and dazzling good looks.

| Min Door Width: 24" | Max Door Width: 48"

| Min Door Height: 36" | Max Door Height: 108"

| 3 1/4" frames with mitered corners

| 1 1/4" triple glazed option

| Available in single & double panel options

| Multi-light configurations

| 1/2" Low profile and 2 3/8 high performance sills available

| 10" kick rail options

Information on colors, hardware, glazing, and performance ratings found on pages 18 - 28





SERIES 8000 | THE CALISTOGA

Innovative and energy efficient, the 8000 sliding door is ideal for commercial applications. Held to the highest standards of quality and performance, the 8000 boasts liquid smooth operation, robust build quality, and a look that will evoke admiration and envy, especially in our massive 8 panel, 10' tall configurations.

The use of multiple thermal breaks help make this door a juggernaut against the elements, and with keyed or thumb turn locking options you will always feel secure. Best of all, our 3" stainless steel rollers make even the largest panels glide with ease.

Whether you need a simple sliding balcony door or an entire wall that opens on the world, the Calistoga is a perfect choice.

| Min Panel Width: 32" | Max Panel Width: 96"

| Min Panel Height: 46" | Max Panel Height: 144"

| Max Over-All Panel Size: 60 square feet

| Up to 8 active panels

| Up to 4 tracks

| 2" sill

| Flush mount or pull handle (keyed lock available)

| 3" stainless steel precision bearing rollers

Information on colors, hardware, glazing, and performance ratings found on pages 18 - 28





SERIES 8100 | THE VERANO

The Series 8100 door is All Weather's most beautiful, functional and versatile sliding door system ever. Held to the highest standards of quality and performance, the 8100 is both innovative and energy efficient, boasting silky smooth operation, a low sill, and a gorgeously thin profile.

The 8100 is the ultimate in versatility. Featuring nearly endless configuration and size possibilities, it is a door sure to turn heads and ignite the imagination. Whether you need a simple sliding door or an entire corner of your structure that opens and pockets, the Verano is the perfect choice.

- | Min Panel Width: 32" | Max Panel Width: 96"
- | Min Panel Height: 46" | Max Panel Height: 144"
- | Max Over-All Panel Size: 60 square feet
- | Flush stacking, corner, and pocket doors | True bypass panels
- | All multi track configurations are possible
- | Block frame with optional stucco adapter
- | 3/4" Low profile sill standard or 2" high performance sill
- | Flush mount or pull handle (keyed lock available)
- | 3" Stainless steel or 1.8" QUADZilla rollers

Information on colors, hardware, glazing, and performance ratings found on pages 18 - 28





SERIES 9100 | THE ST. HELENA

Innovative and energy efficient, the All Weather Series 9100 bi-fold door is ideal for commercial applications that need the widest opening possible but don't have the ability to accommodate a pocket door. Held to the highest standards of quality and performance, the St. Helena has a custom look that will turn heads, especially in our massive 16 panel, 52' wide configurations. It can even be built as a window for bar top & kitchen applications.

With dozens of configurations, whether you need a simple bi-fold door or an entire wall that opens on the world, the 9100 is a perfect choice.

- | Min Panel Width: 24" | Max Panel Width: 39"
- | Min Panel Height: 79" | Max Panel Height: 144"
- | Maximum # Of Doors: 8 Each Way | 16 Panels | 52 ft
- | Max Panel Weight: 220 lbs (each panel)
- | Door Thickness: 2 1/4"
- | 1/2" and 2 1/4" sill configurations available

Information on colors, hardware, glazing, and performance ratings found on pages 18 - 28



WINDOW & DOOR FINISHES



CLASS 1 DARK BRONZE

Sophisticated and timeless, dark bronze fits in where a more traditional aesthetic is desired.



CLASS 1 CLEAR

Sleek and modern, the 'aluminum look' is best suited for contemporary design tastes and styles.



WHITE

An excellent choice if you are trying to match Aluminum windows to existing vinyl type window and door products*.

*CUSTOM PAINT IS ALSO AVAILABLE. EXTENDED LEAD TIMES APPLY.

WINDOW HARDWARE

Each handcrafted window is an exceptional work of art with painstaking attention paid to each custom detail, so it is no surprise that our hardware selection is also carefully curated for it's beauty, functionally, fit, and finish. We want your windows to be a reflection of your client's personal style and the right hardware is essential to achieve this goal. This guide is designed to help you choose the finishing touch that is perfect for you!



ADA CRANK HANDLE
SERIES 3000 | 5000 | 6000



CONTOUR CRANK HANDLE
SERIES 5000 | 6000



CONTOUR LOCKING HANDLE
SERIES 5000 | 6000



CONTOUR PIVOT SHOE OPERATOR
SERIES 5000 | 6000



CONTOUR ROTO OPERATOR
SERIES 5000 | 6000



CRANK HANDLE
SERIES 3000 | 5000 | 6000



FOLDING CRANK HANDLE
SERIES 3000 | 5000 | 6000



LINEAR MULTI-POINT HANDLE
SERIES 3000 | 5000 | 6000



PIVOT SHOE OPERATOR
SERIES 3000 | 5000 | 6000



ROTO OPERATOR
SERIES 3000 | 5000 | 6000



PAWL HOLE CAM HANDLE
SERIES 3000 | 5000



MELRON CAM HANDLE
SERIES 5000 | 6000



ROTO LOCKING HANDLE
SERIES 5000 | 6000

DOOR HARDWARE

Each door we produce is the portal that connects you to the world around you. Door hardware must be flawless with glassy smooth operation, comfortable hand feel, and ultra-secure to protect you from weather and harm. Hardware also needs to visually complement your stunning doors and let your personal style shine through. This guide is designed to help you choose the look that you will reach for each day and love it every time.



7000 SWING DOOR
DALLAS



7000 SWING DOOR
TOKYO



7000 SWING DOOR
STOCKHOLM



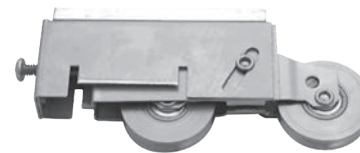
8000 | 8100 SLIDING DOOR
STANDARD PULL HANDLE



8000 | 8100 SLIDING DOOR
NON-KEYED ACTUATOR



8000 | 8100 SLIDING DOOR
FLUSH MOUNT FINGER PULL



8000 | 8100 SLIDING DOOR
2" ROLLER



8000 | 8100 SLIDING DOOR
3" ROLLER



8100 SLIDING DOOR
QUADZILLA 1 1/8" ROLLER

DOOR SILLS

Whichever door style you choose, All Weather has a sill to meet your needs. From standard sills that give you ultimate protection from the elements, to low profile sills that nearly disappear, All Weather has you covered.



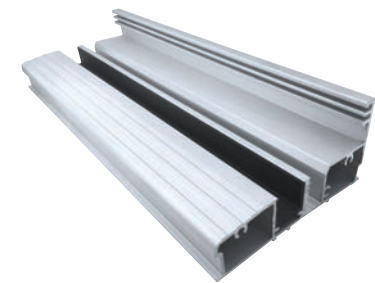
7000 STANDARD SILL



8000 STANDARD SILL



8100 2" WATER LEG SILL



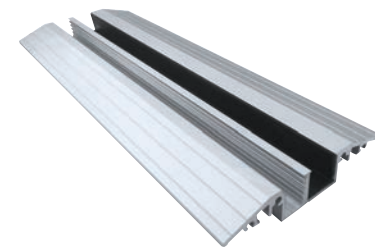
9100 STANDARD SILL



7000 LOW PROFILE SILL



8100 3/4" LOW RISE SILL



9100 ADA SILL

GLASS

ENERGY EFFICIENCY (NFRC)

LOW E (Low-Emissivity)

Low E is a transparent coating used to minimize the amount of infrared and ultraviolet light that passes through a piece of glass. This coating improves energy performance in windows by reflecting exterior heat during warmer seasons and retaining interior heat during colder seasons.

Vitro Solarban 60™ (SB60) has two coatings to provide enhanced levels of energy performance.

Vitro Solarban 70™ (SB70) has three coatings to provide even more energy efficiency. Paired with argon gas and LoF Energy Advantage (Hardcoat) in a single insulated unit, it will give you the highest performing glass package available in AWAA products.

TINTS

Tinted glass is available in a wide range of colors to meet your visual and energy performance needs. Bronze, Grey, Green and Blue are our most popular options.

LAMINATED

Laminated glass is a safety glass that is two pieces of glass bonded together with a plastic interlayer. This interlayer helps strengthen the glass against impact and, if damage does occur, the plastic will hold the broken shards together limiting the risk of injury from the glass. Laminated glass is also used as a moderate acoustical pane, offering some sound barrier.

OPTIPHON SOUND CONTROL

Pilkington Optiphon™ is a laminated glass that utilizes a special PVB interlayer that enhances sound insulation performance. Using this glass in place of a clear pane can provide excellent sound control with the same benefits as laminated glass.

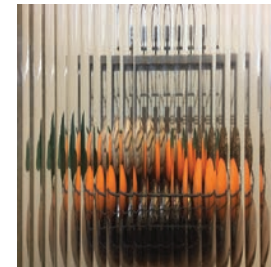
ARGON FILLED

Argon is a colorless and odorless dense gas that helps improve energy performance. Argon gas can be injected between two panes of glass in insulated glass units to achieve better energy ratings.

DECORATIVE



CLEAR



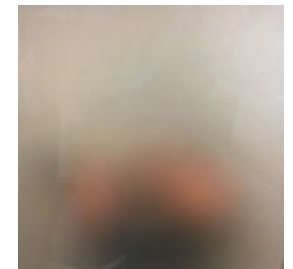
NARROW REED



OBSCURE



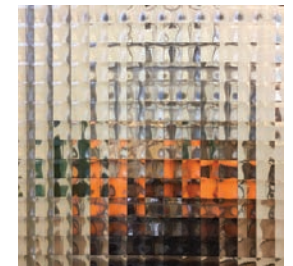
BLUE CHIP



SATIN ETCH



RAIN



CROSS REED

GLASS MAKE-UP REFERENCE GUIDE

Series 5000 2 1/4" Thermally Broken Fill & Debridge Aluminum Window - All Frame Types

Glass Make Up	Fixed		Casement		Awning	
	U-Factor	SHGC	U-Factor	SHGC	U-Factor	SHGC
3/16 SB60 / Air / 3/16 Clear	0.37	0.34	0.48	0.28	0.48	0.28
3/16 SB60 / Argon / 3/16 Clear	0.34	0.34	0.45	0.27	0.45	0.27
3/16 SB70 / Air / 3/16 Clear	0.37	0.24	0.48	0.20	0.48	0.20
3/16 SB70 / Argon / 3/16 Clear	0.33	0.24	0.45	0.19	0.45	0.19
3/16 SB70 / Argon / 3/16 Energy Adv.	0.29	0.23	0.41	0.19	0.42	0.19

Series 6000 2 1/2" Thermal Strut Aluminum Window - Nail On Frame

Glass Make Up	Fixed		Casement		Awning	
	U-Factor	SHGC	U-Factor	SHGC	U-Factor	SHGC
3/16 SB60 / Air / 3/16 Clear	0.35	0.34	0.45	0.27	0.45	0.27
3/16 SB60 / Argon / 3/16 Clear	0.31	0.34	0.42	0.26	0.42	0.26
3/16 SB70 / Air / 3/16 Clear	0.35	0.24	0.45	0.19	0.45	0.19
3/16 SB70 / Argon / 3/16 Clear	0.31	0.24	0.39	0.19	0.31	0.19
3/16 SB70 / Argon / 3/16 Energy Adv.	0.26	0.23	0.36	0.18	0.38	0.18

Series 7000 Thermal Strut Aluminum Swing Door Standard Sill

Glass Make Up	Inswing		Outswing	
	U-Factor	SHGC	U-Factor	SHGC
3/16 SB60 / Air / 3/16 Clear	0.41	0.26	0.42	0.26
3/16 SB60 / Argon / 3/16 Clear	0.38	0.26	0.39	0.26
3/16 SB70 / Air / 3/16 Clear	0.41	0.19	0.42	0.19
3/16 SB70 / Argon / 3/16 Clear	0.37	0.18	0.39	0.18
3/16 SB70 / Argon / 3/16 Energy Adv.x	0.34	0.18	0.36	0.18

Series 8000 Thermal Strut Aluminum Sliding Doors

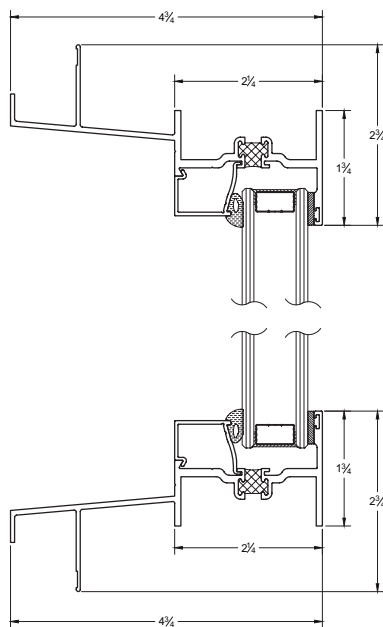
Glass Make Up	U-Factor	SHGC
3/16 SB60 / Air / 3/16 Clear	0.38	0.30
3/16 SB60 / Argon / 3/16 Clear	0.35	0.30
3/16 SB70 / Air / 3/16 Clear	0.38	0.21
3/16 SB70 / Argon / 3/16 Clear	0.34	0.21
3/16 SB70 / Argon / 3/16 Energy Adv.	0.30	0.20
1/4 SB70 / Argon / 1/4 Energy Adv.	0.30	0.20

Series 8100 Thermal Strut Aluminum Sliding Doors

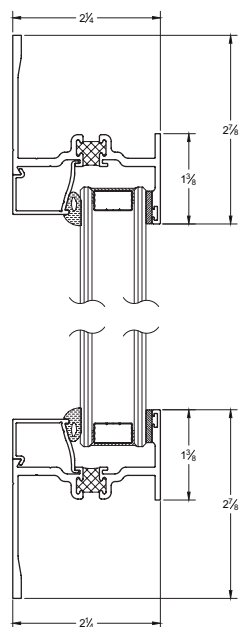
Glass Make Up	U-Factor	SHGC
3/16 SB60 / Air / 3/16 Clear	0.39	0.31
3/16 SB60 / Argon / 3/16 Clear	0.36	0.31
3/16 SB70 / Air / 3/16 Clear	0.39	0.22
3/16 SB70 / Argon / 3/16 Clear	0.35	0.22
3/16 SB70 / Argon / 3/16 Energy Adv.	0.31	0.21
1/4 SB70 / Argon / 1/4 Energy Adv.	0.31	0.21

SERIES 5000

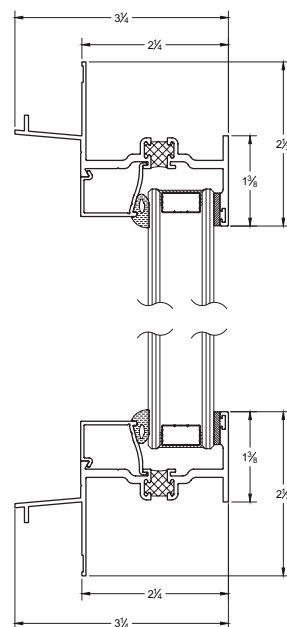
	Fixed	Casement	Awning	Hopper
Product Rating	C50	C50	C50	C50
AAMA/WDMA/CSA 101.1.S.2/440-08				
NFRC	Certified	Certified	Certified	Certified
Sound Transmittance Rating <small>up to</small>	STC 38 OITC 32	STC 40 OITC 32	STC 41 OITC 32	



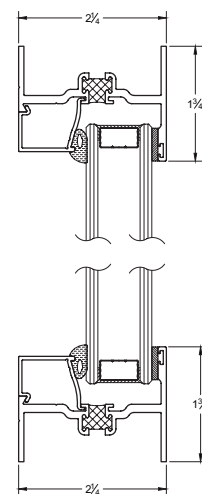
Panning



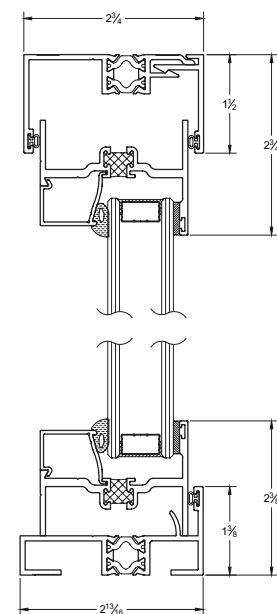
Z-Bar



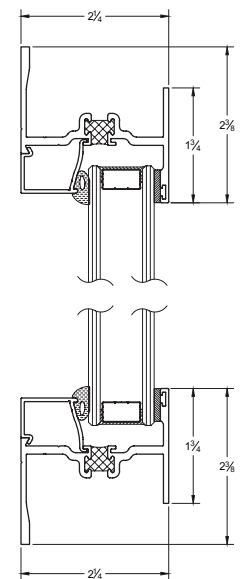
Nail Fin



Equal Leg



Equal Leg with Comp Channel

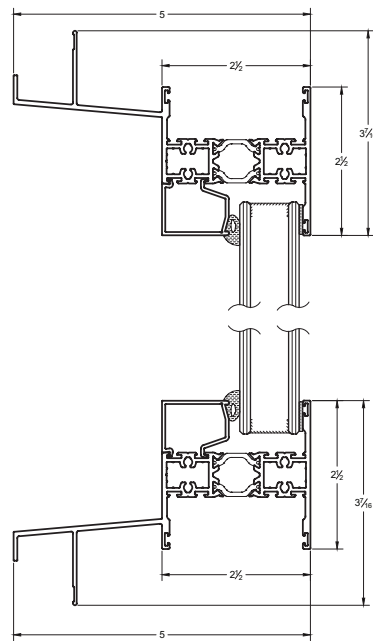


Slope Sill

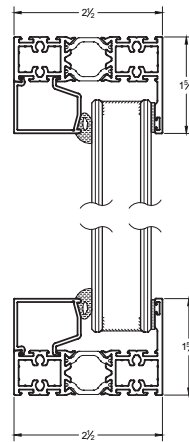
To access Division 8 Specifications, CAD, and BIM/Revit files please visit www.allweatheraa.com

SERIES 6000

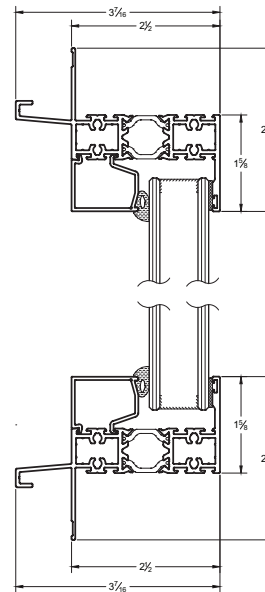
	Fixed	Casement	Awning
Product Rating	AW80	AW80	AW80
AAMA/WDMA/CSA 101.1.S.2/440-08			
NFRC	Certified	Certified	Certified
Sound Transmittance Rating ^{up to}	STC 39 OITC 31	STC 40 OITC 32	STC 41 OITC 33



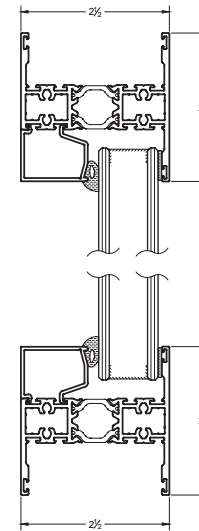
Panning



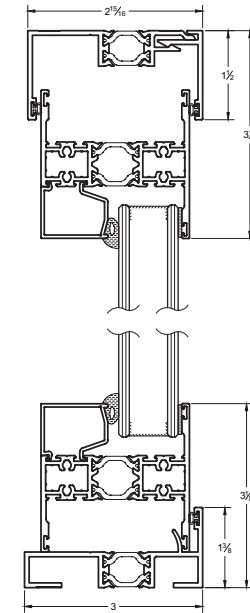
Low Profile



Nail Fin



Equal Leg

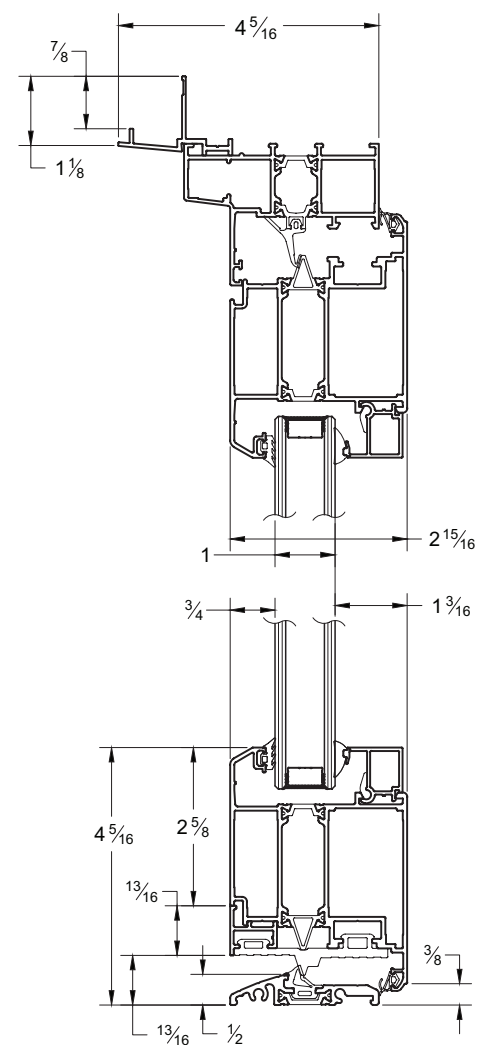
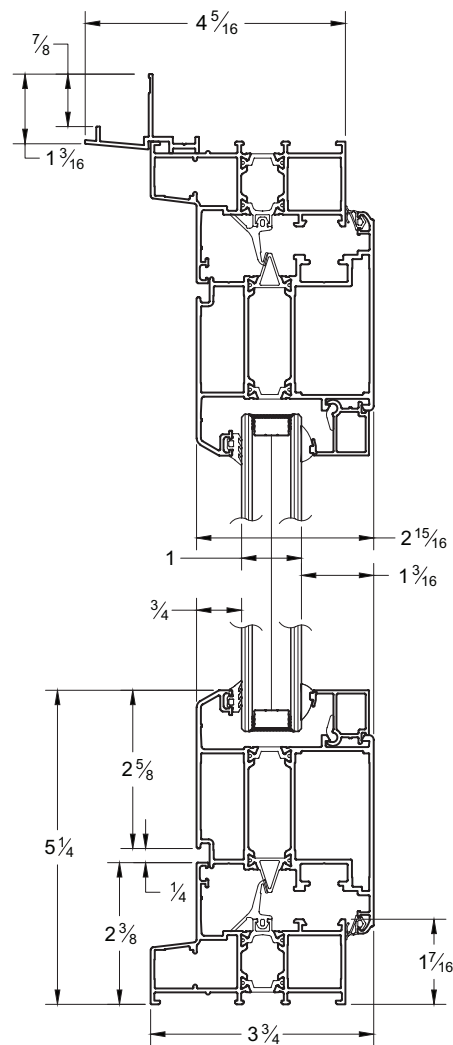


Equal Leg with Comp Channel

To access Division 8 Specifications, CAD, and BIM/Revit files please visit www.allweatheraa.com

SERIES 7000

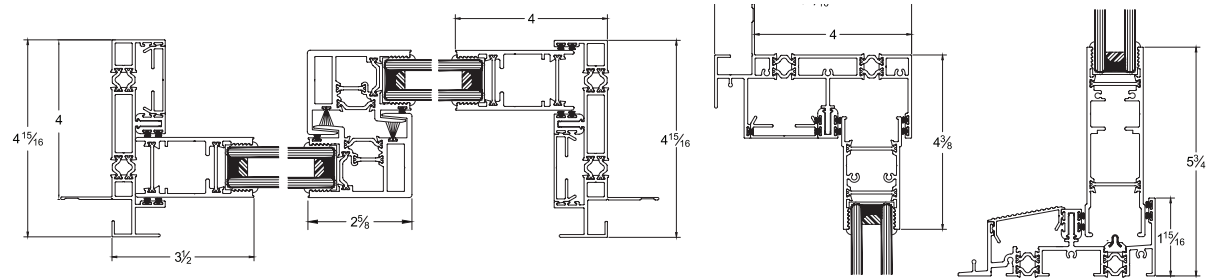
Product Rating	Outswing w/Sidelight
AAMA/WDMA/CSA 101.1 S.2/440-08	1/2" Low Sill
NFRC	C30
Sound Transmittance Rating up to	Certified
	STC 40
	OITC 32



To access Division 8 Specifications, CAD, and BIM/Revit files please visit www.allweatheraa.com

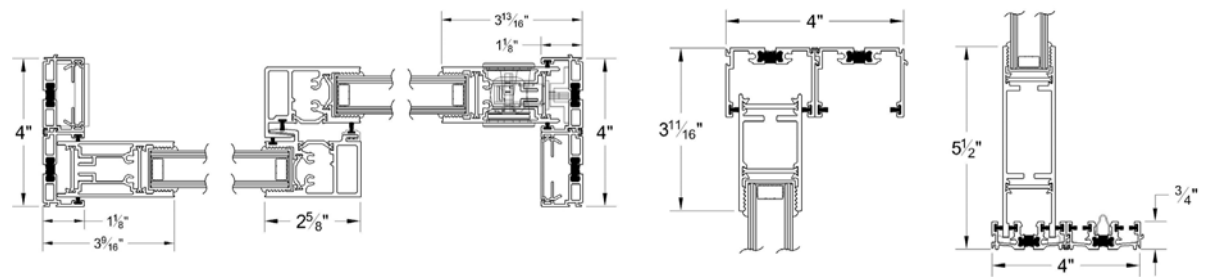
SERIES 8000

Product Rating AAMA/WDMA/CSA 101.1.S.2/440-05	XO Door C30
NFRC	Certified
Sound Transmittance Rating up to	STC 34 OITC 28



SERIES 8100

Product Rating AAMA/WDMA/CSA 101.1.S.2/440-11	XO Door C30
NFRC	Certified
Sound Transmittance Rating up to	STC 38 OITC 31



To access Division 8 Specifications, CAD, and BIM/Revit files please visit www.allweatheraa.com

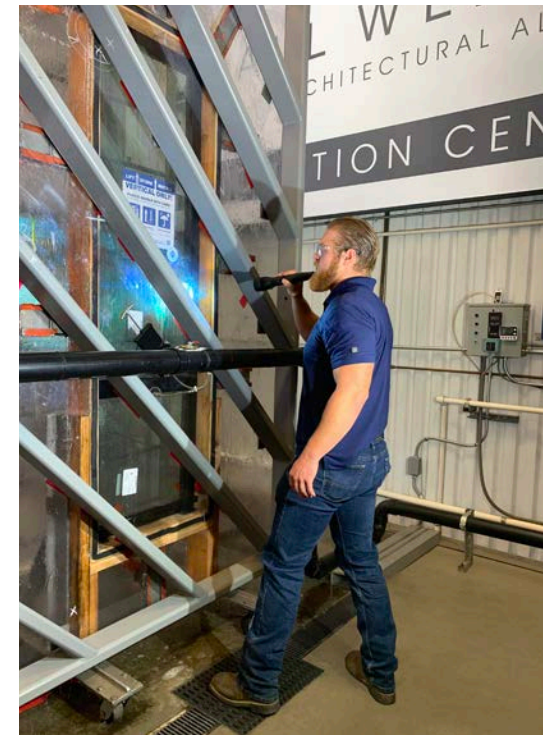
ALL WEATHER INNOVATION CENTER

The All Weather Innovation Center promotes the research and development of new ideas. In the innovation center our engineers fabricate custom tooling, jigs, fixtures, experiment with new products, and conduct performance testing. Fostering an environment of continuous improvement and superior quality is our goal.

Perhaps most critically, the innovation center is also the home of our water test wall. Modeled after test walls used to certify window and door performance, we conduct tests at full laboratory pressures. We are always looking to improve our product and exceed the quality expectations of our customers, which is why we submit our products to rigorous laboratory-rated testing before they are sent out to the customer.

WATER TESTING PROCEDURES

- 1: Windows are chosen at random to be pulled from finished goods for testing.
- 2: The window is transferred to the innovation center where a buck is built out of 2 x 6 lumber.
- 3: The window is sealed inside the buck, checked for plumb & level, then clamped to a transparent wall. The wall has a port where air can be pulled to create a vacuum that simulates high pressure winds contacting the exterior face of the window. The amount of pressure is determined by the test rating we need to exceed.
- 5: A spray rack is rolled in front of the product. Once the spray is set at 15 Psi and the vacuum pressure is appropriately adjusted, the window is tested for fifteen-minutes. During the test, the technician will monitor the vacuum pressure, spray pressure, and meticulously inspect the window for signs of leaks with a flashlight. (Should you like to witness a test of your windows, we are happy to arrange a plant tour & test inspection.)
- 6: Once the test is complete and the product passes, pictures of each window are taken and the appropriate documentation and logs are filled out.







777 ALDRIDGE ROAD | VACAVILLE | CA | 95688

P 707.452.1600 | F 707.452.1616 | WWW.ALLWEATHERAA.COM

