



ENHANCE HOW YOU EXPERIENCE THE WORLD AROUND YOU





ALL WEATHER | WELCOME

For over 50 years All Weather has hand crafted exceptional custom aluminum windows & doors. Utilizing the highest quality materials and applying the superior workmanship of true artisans, we have breathed life into thousands of residential and commercial building projects up and down the entire west coast and beyond.

Over the decades, All Weather's ability to provide creative solutions to challenging projects has been the company's cornerstone and continues to set All Weather apart from our competition. In fact, offering custom products for our clientele and not competing with mass quantity producers is our primary purpose.

We believe in service beyond expectation and we achieve this by listening to you. We want you to understand that whether this is your first project with us, or your 100th, our pledge remains the same: We are here to support you by providing expert product knowledge, a world-class customer service experience and on-time delivery of the best aluminum windows and doors on the planet.

Now under 3rd generation family ownership, our desire to foster deep and meaningful relationships in order to drive All Weather's growth and prosperity remains unwavering. We value you, your business and the opportunity to make each of your projects more amazing with our stunning windows and doors.

Welcome to All Weather.



ALL WEATHER | CUSTOM WINDOWS

All Weather windows put an exquisite frame around the moments of you or your clients' lives. Whether our products provide a view out into your garden or onto a quad, the perfect spot to look out on the city or your backyard, or a corner or home office flooded in natural light, we build our exceptional custom windows with memories in mind.

Not only do All Weather windows beautify your home or commercial projects, but they are also perfectly functional, energy efficient, and incredibly secure. It is our goal to provide you an experience that will help you find the ideal window to match the design aesthetic you or your clients are working to achieve.

On the following pages you will find our full line of window systems with photos, product details and information to help you visualize the possibilities of making beautiful custom windows a part of your home or next build.





FELDMAN ARCHITECTURE | PHOTOGRAPHY JOE FLETCHER

The Series 5000 Window System is All Weather's most popular and cost effective thermally broken window design. Utilizing a pour & debridge thermal break, the Series 5000 offers energy efficiency without sacrificing performance or aesthetics.

Utilizing extruded, age hardened aluminum that boasts a T-6 rating for strength and durability, the Series 5000 window is built to last with a wall thickness that meets or exceeds commercial window standards. Economical, durable and beautiful, the Series 5000 is the ideal projected custom window solution for residential and multi-family applications.

SERIES 5000 | 2 ¼" WINDOW SYSTEM

FEATURES

- 2 ¼" Frame with mitered corners
- Fixed, casement, awning, hopper & combination configurations
- Max casement size of 36" x 60"
- Max fixed lite size 50 square feet
- Exterior glazed
- Thermally broken frame – Pour & Debridge system

FRAME OPTIONS

- Standard Nail On, Panning Nail On, Equal Leg / Comp Channel, Equal Leg / F-Clip, Z-Bar

GLAZING OPTIONS

- 1" OA insulated units
- 1" Simulated Divided Lite (SDL) – Flat or beveled bar
- 2 ¾" True Divided Lite (TDL) – Square or beveled bead

HARDWARE OPTIONS

- Roto operator with butt hinges
- Cam handle friction hinge
- Multi-point lock with roto operator

RATINGS & CERTIFICATION

- NFRC Certified Product
- Performance Grade Rating PG50
- Acoustically Rated





The Series 6000 window system is one of All Weather's most energy efficient and highest rated window designs and is an ideal exterior glazed solution for residential applications and buildings 12 stories and under.

Built to meet virtually any design and performance criteria for an aluminum window product, the commercially rated Series 6000 window's mitered and crimped corners provide exceptional strength and a contemporary aesthetic. The thermally strutted frame increases energy efficiency and allows for split finish options for the interior and exterior for maximum design flexibility.

SERIES 6000 | 2 ½" WINDOW SYSTEM

FEATURES

- 2 ½" Frame with mitered corners
- Fixed, casement, awning & combination configurations
- Max casement size of 36" x 72"
- Max fixed lite size 60 square feet
- Thermally broken frame – Thermal strut system
- Triple glazed options

FRAME OPTIONS

- Standard Nail On, Panning Nail On, Equal Leg / Comp Channel, Low Profile

GLAZING OPTIONS

- 1" OA insulated units – 1 ½" OA triple glazed
- 1" Simulated Divided Lite (SDL) – Flat bar
- 2 ½" True Divided Lite (TDL)

HARDWARE OPTIONS

- Roto operator with butt hinges
- Cam handle friction hinge
- Multi-point lock with roto operator

RATINGS & CERTIFICATION

- NFRC Certified Product
- Performance Grade Rating PG80
- Acoustically Rated





The Series 6100 Window System is All Weather's newest, most optimized, energy efficient window design. The 6100 is All Weather's first window system engineered to meet Title 24 compliance using the Prescriptive Method.

The all-new aluminum extrusion design provides a contemporary aesthetic and utilizes All Weather's state-of-the-art insulated glass production capabilities. The Series 6100 delivers best-in-class energy efficiency, offers split finish color options for maximum design flexibility, and is the preferred choice for residential applications and exterior glazed solutions for buildings 12 stories and under.

SERIES 6100 | 3 ¾" WINDOW SYSTEM

FEATURES

- 3 ¾" Frame with mitered corners
- Fixed, casement, awning & combination configurations
- Max casement size of 48" x 96"
- Max fixed lite size 60 square feet
- Thermally broken frame – Thermal strut system
- Concealed hinges for contemporary aesthetic

FRAME OPTIONS

- Nail On

GLAZING OPTIONS

- 1" OA insulated glass units – 1 ¼" OA triple glazed
- 1" Simulated Divided Lite (SDL) – Flat Bar
- 3 ⅛" True Divided Lite (TDL)

RESIDENTIAL HARDWARE OPTION

- Encore Contemporary handle
- Amesbury Truth High Performance Single Arm Operator
- Max casement width 42" and min casement width 23 ½"
- Max casement height 72" when width is greater than 30"
- Max casement height 78" when width is equal to or less than 30"
- Supports sash up to 140 lbs.

COMMERCIAL HARDWARE OPTION

- European style Fapim Out System
- Handle rotation allows for sash lock, unlock and actuation
- Supports sash up to 280 lbs.
- Max casement width 48" and min casement width 23 ½"
- Max casement height 98"
- ADA compatible handle available

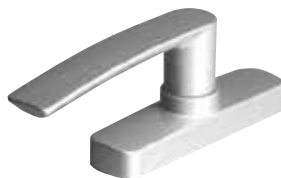
RATINGS & CERTIFICATION

- NFRC Certified Product
- .30 U Value or better to meet Title 24 compliance
- Performance Grade Rating PG60
- Acoustically Rated

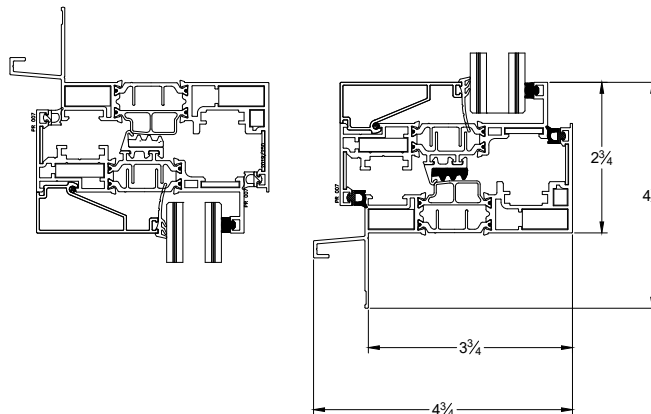
ENCORE CONTEMPORARY OPERATOR



FAPIM OUT OPERATOR



ASSEMBLY DRAWINGS



ALL WEATHER | WINDOW SERIES COMPARISON CHART

PRODUCT NAME	SERIES 5000	SERIES 6000	SERIES 6100
Frame Depth	2¼"	2½"	3¾"
Configurations	Casement, Awning, Hopper, Fixed	Casement, Awning, Fixed	Casement, Awning, Fixed
Frame Types	Nail On, Panning, Equal Leg/Comp Channel, F-Clip, Z-Bar	Nail On, Panning, Equal Leg/Comp Channel, Low Profile	Nail On
Max Casement Size	36" x 60"	36" x 72"	48" x 96"
Max Fixed Lite Size	50 sq. ft.	60 sq. ft.	60 sq. ft.
Thermally Broken	Yes	Yes	Yes
Glazing	1" OA	1"-1½" Triple Glazed	1"-1¼" Triple Glazed
SDL	1" Flat or Beveled	1" Flat	1" Flat
TDL	2⅜"	2½"	3⅛"
Split Finish	No	Yes	Yes
PERFORMANCE	SERIES 5000	SERIES 6000	SERIES 6100
DP Structural Rating	PG50	PG80	PG60
NFRC Energy Rating	0.41	0.38	0.30*
STC Acoustic Rating	Up to 39	Up to 41	Up to 43*

**Series 6100 NFRC and STC ratings pending final test results.*

Performance based on casement window testing results. Comparison chart data subject to change without notice. Visit allweatheraa.com for current product information and ratings.

ALL WEATHER | WINDOW HARDWARE

Each handcrafted window is an exceptional work of art with painstaking attention paid to each custom detail, so it is no surprise that our hardware selection is also carefully curated for it's beauty, functionally, fit, and finish. We want your windows to be a reflection of your personal style and the right hardware is essential to achieve this goal. This guide is designed to help you choose the finishing touch that is perfect for you!



ADA CRANK HANDLE
SERIES 5000 | 6000



CONTOUR CRANK HANDLE
SERIES 5000 | 6000



CONTOUR LOCKING HANDLE
SERIES 5000 | 6000



CONTOUR PIVOT SHOE OPERATOR
SERIES 5000 | 6000



CONTOUR ROTO OPERATOR
SERIES 5000 | 6000



CRANK HANDLE
SERIES 5000 | 6000



FOLDING CRANK HANDLE
SERIES 5000 | 6000



LINEAR MULTI-POINT HANDLE
SERIES 5000 | 6000



PIVOT SHOE OPERATOR
SERIES 5000 | 6000



ROTO OPERATOR
SERIES 5000 | 6000



PAWL HOLE CAM HANDLE
SERIES 5000



MELRON CAM HANDLE
SERIES 5000 | 6000



ROTO LOCKING HANDLE
SERIES 5000 | 6000



ENCORE OPERATOR
SERIES 6100



FAPIM OUT OPERATOR
SERIES 6100



ALL WEATHER | CUSTOM DOORS

All Weather doors offer more than just a remarkable view. Our stunning products let you or your client's personal style shine through? They are beautiful, functional, energy efficient, and incredibly secure. Each custom door we produce, whether sliding, swinging, or folding, becomes the portal that connects you to the world around you.

At All Weather, it is our goal to craft each individual door to meet your vision of perfection, and to blur the lines between your indoor and outdoor spaces allowing you or your client to enhance the way they experience the world around them. You can rest easy knowing our doors are backed by a superior 10 year limited residential and commercial warranty that includes 1 year free labor.

On the following pages, you will find our comprehensive line of door systems, complete with photos, product details and information to help make effortlessly smooth swing doors and moveable glass walls part of your home or next project.





The Series 7000 Swing Door System provides structural excellence, energy efficiency and utilizes the latest technology to keep you comfortable, safe, and secure.

The Series 7000 door features narrow sightlines, a contemporary aesthetic and split finish color options for maximum design flexibility. The Series 7000 utilizes a thermal strut system for increased thermal performance, delivers optimal acoustic insulation and offers water & air tightness. The Series 7000 door is the ideal solution for use in contemporary mixed-use/multi-family commercial buildings and residential architecture.

SERIES 7000 | SWING DOOR SYSTEM

FEATURES

- 3 ¼" Frame with mitered corners
- Max panel width of 48" and min panel width of 24"
- Max panel height of 120" and min panel height of 36"
- Max panel size of 48" x 96" or 36" x 120"
- Sidelights and Transoms (fixed glass only)
- Thermally broken frame – Thermal strut system
- Rigid corner key frame construction

FRAME & SILL OPTIONS

- Nail On, Panning, or Equal Leg
- 2 ¾" Sill and ½" Low Profile sill available
- 10" Kick rail available

CONFIGURATIONS

- Inswing or Outswing
- Single or double panel available
- Multi-light configurations

GLAZING OPTIONS

- 1" OA insulated glass units – 1 ¼" OA triple glazed
- 1" Simulated Divided Lite (SDL) – Flat bar
- 2 ½" True Divided Lite (TDL)

HARDWARE OPTIONS

- Multi-point locking, thumb turn, or keyed lock available
- Tokyo handle standard, Dallas and Stockholm handles available
- 42" Standard handle height or custom handle height available

RATINGS & CERTIFICATION

- NFRC Certified Product
- Commercial Rating C30
- Acoustically Rated





The Series 8000 Sliding Door System is one of All Weather's most innovative, durable and energy efficient door designs. Enhance how you experience the world around you by opening an entire wall with the Series 8000 sliding door's massive 8 panel, 12' tall configuration.

Held to the highest standards of quality and performance, the Series 8000 features 3" stainless steel precision bearing rollers for smooth operation, multiple thermal breaks for increased energy efficiency, split finish color options for maximum design flexibility and boasts robust build quality. The Series 8000 sliding door is ideal for commercial projects and custom residential applications.

SERIES 8000 | SLIDING DOOR SYSTEM

FEATURES

- Max panel width of 96" and Min panel width of 24"
- Max panel height of 144" tall and min panel height of 48"
- Max panel size of 70 square feet
- Up to 8 active panels, up to 4 tracks
- Thermally broken frame – Thermal strut system
- Standard extruded Quanex screen, optional Centor retractable screen available
- Square cut corners, mechanically fastened

FRAME & SILL OPTIONS

- 2" Sill
- Nail On
- Block Frame

CONFIGURATIONS

- XO, OX, XXO, OXX, OXO, XOO, OOX, OXXO, OXXXXO

GLAZING OPTIONS

- 1" OA insulated glass
- 1" Simulated Divided Lite (SDL) – Flat bar
- 2 1/8" True Divided Lite (TDL)
- Marine glazed
- Enhanced Noise Reduction (STC)

HARDWARE OPTIONS

- Flush mount or modern D pull handle
- 3" Stainless Steel rollers
- 1.8 Stainless Steel rollers for panel widths of 22" - 26"

RATINGS & CERTIFICATION

- Up To .30 U-Values Achievable
- Commercial Rating C30
- Acoustically Rated





The Series 8100 Multi Slide Door System is All Weather's most innovative, energy efficient and versatile design. The Series 8100 offers unlimited possibilities with corner, pocket, and flush stacking door configurations.

Held to the highest standards of quality and performance, the Series 8100 is commercially and acoustically rated, boasts smooth operation, and features a low profile sill, multiple thermal breaks and contemporary narrow sightlines. The Series 8100 Multi Slide Door System is the perfect choice for residential applications but can also meet your commercial project needs.

SERIES 8100 | MULTI SLIDE DOOR SYSTEM

FEATURES

- Max panel width of 96" and min panel width of 24"
- Max panel height of 144" and min panel height of 48"
- Max panel size of 70 square feet
- Unlimited number of panels
- Pour & Debridge thermally broken frames with Thermal strut system panels
- Optional full panel screen available
- Optional Centor retractable screen available
- Square cut corners, mechanically fastened

FRAME & SILL OPTIONS

- Block frame with optional stucco return
- 2" Sill, ¾" Low Profile sill and Tile sill available

CONFIGURATIONS

- Unlimited multi track configuration
- Flush Stacking Multi Slide Doors for true bypass panels
- Pocket Doors, 90 Degree Corner Doors

GLAZING OPTIONS

- 1" OA insulated glass
- 1" Simulate Divided Lite (SDL) – Flat bar
- Enhanced Noise Reduction (STC)

HARDWARE OPTIONS

- Flush mount or modern D pull handle
- Keyed lock available
- 3" Stainless Steel rollers
- 1.8" Quadzilla Low Profile Stainless/Composite rollers

RATINGS & CERTIFICATION

- Up To .30 U-Values Achievable
- Commercial Rating C30
- Acoustically Rated





The Series 8150 is All Weather's newest thermally broken sliding door system. The Series 8150 sliding door is a two track system designed to simplify and improve the installation experience for commercial, mid-rise, mixed use and residential projects.

The all-new aluminum extrusion design provides a contemporary aesthetic and combined with All Weather's state of the art insulated glass production capabilities, the 8150 delivers enhanced energy performance.

SERIES 8150 | 3 ¾" SLIDING DOOR SYSTEM

FEATURES

- Max panel width of 96" and min panel width of 24"
- Max panel height of 144" and min panel height of 48"
- Max panel size of 70 square feet
- Up to 4 panels wide
- Thermally broken frame – Pour & Debridge system
- Stronger single-piece 6063-T6 aluminum two-track frame
- Integrated, economical screen design
- Improved water weeping system

FRAME & SILL OPTIONS

- True Nail On or block frame available
- 2" Sill and ¾" Low Profile sill available

CONFIGURATIONS

- OX, XO
- OXXO

GLAZING OPTIONS

- 1" OA insulated glass
- 1" Simulated Divided Lites (SDL) – Flat Bar

HARDWARE OPTIONS

- Flush mount or modern D pull handle
- 1.8" Tandem stainless steel rollers standard, up to 600 lb panel weight
- 1.8" Quadzilla stainless steel rollers for heavy panels, up to 1200 lb panel weight

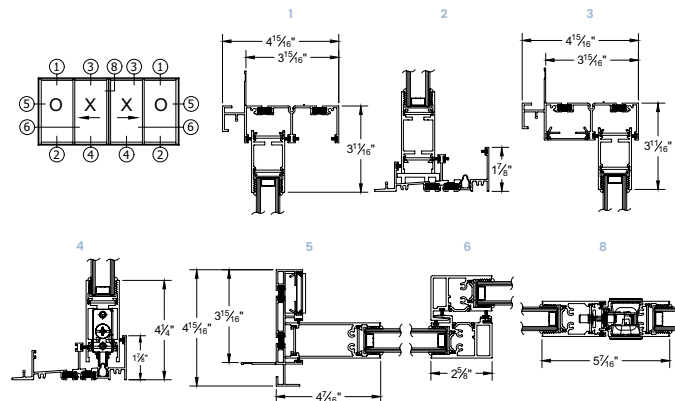
RATINGS & CERTIFICATION

- NFRC Certified Product
- Commercial Rating C35
- Acoustically Rated

FLUSH MOUNT HANDLE



CROSS SECTION DETAILS





The innovative Series 9100 Folding Door System completely transforms space by bringing the outside in and enhancing indoor-outdoor living by allowing more natural light and open-air, and maximizing views.

Held to the highest standards of quality and performance, the Series 9100 bifolding doors are top hung for smooth and effortless operation and feature 2 ¼" thick panels for robust build quality and commercial ratings.

Whether you need a simple bifold patio door or want to open up an entire wall with our massive 16 panel, 52' wide, 12' tall configuration, the Series 9100 Folding Door System is the perfect choice for residential and commercial projects.

SERIES 9100 | BIFOLD DOOR SYSTEM

FEATURES

- Max panel width of 39" and min panel width of 24"
- Max panel height of 144" and min panel height of 79"
- Max panel size of 39" x 144"
- Up to 16 panels, 8 in each direction
- 2 ¼" Thick robust panels for commercial ratings
- Top hung for smooth and effortless operation

FRAME & SILL OPTIONS

- Block frame
- 2 ¼" Sill and ½" Low Profile sill available

CONFIGURATIONS

- Inswing or Outswing
- Custom size for Bifold windows available
- Limitless configuration options with a minimum of 2 panels up to a maximum of 8 panels

GLAZING OPTIONS

- 15/16" OA insulated glass

HARDWARE OPTIONS

- Twin point Stainless Steel hardware
- Lever Lock Sets
- Multi-Point Door Locks
- Keyed lock available

RATINGS & CERTIFICATION

- Commercially Rated



ALL WEATHER | DOOR SILLS

Whichever door style you choose, All Weather has a sill to meet your needs. From 2" sills that give you ultimate protection from the elements, to low profile sills that nearly disappear, All Weather has you covered.



7000 2 $\frac{3}{8}$ " SILL



7000 $\frac{1}{2}$ " LOW PROFILE SILL



8000 2" SILL



8100 2" SILL



8100 $\frac{3}{4}$ " LOW PROFILE SILL



8100 TILE SILL



9100 2 $\frac{1}{4}$ " SILL



9100 $\frac{1}{2}$ " LOW PROFILE ADA SILL

ALL WEATHER | DOOR HARDWARE

Each door we produce is the portal that connects you to the world around you. Door hardware must be flawless with glassy smooth, operation, comfortable hand feel, and ultra-secure to protect you from the elements. Hardware also needs to visually complement your stunning doors and let your personal style shine through. This guide is designed to help you choose the look that you will reach for each day and love it every time.



7000 SWING DOOR
DALLAS



7000 SWING DOOR
TOKYO



7000 SWING DOOR
STOCKHOLM



**8000 | 8100 | 8150
SLIDING DOOR**
MODERN D PULL HANDLE



**8000 | 8100 | 8150
SLIDING DOOR**
NON-KEYED ACTUATOR



**8000 | 8100 | 8150
SLIDING DOOR**
FLUSH MOUNT FINGER PULL



8000 | 8150 SLIDING DOOR
1.8" ROLLERS



8000 | 8100 SLIDING DOOR
3" ROLLERS



8100 | 8150 SLIDING DOOR
1.8" QUADZILLA ROLLERS

ALL WEATHER | DOOR SERIES COMPARISON CHART

PRODUCT NAME	SERIES 7000	SERIES 8000	SERIES 8100	SERIES 8150	SERIES 9100
Door Operation	Swing	Multi Slide	Multi Slide	Sliding	Bifold
Configurations	Inswing, Outswing	XO, OX, XXO, OXX, OXO, XO0, OOX, OXXO, OXXXXO	Unlimited Flush Stacking, Corner, Pocket	XO, OX, OXXO	Inswing, Outswing
Max Panel Size	48"x96", 42"x108", 36"x120"	70 sq. ft.	70 sq. ft.	70 sq. ft.	39" x 144"
Max Panel Width	48"	96"	96"	96"	39"
Max Panel Height	120"	144"	144"	144"	144"
Max # of Panels	2	8	Unlimited	4	16
Thermally Broken	Yes	Yes	Yes	Yes	No
Sill Options	½" Low Profile, 2⅜" Sill	2" Sill	¾" Low Profile, 2" Sill, Tile Sill	¾" Low Profile, 2" Sill	½" Low Profile, 2¼" Sill
Glazing	1"-1¼" Triple Glazed	1" OA	1" OA	1" OA	1⅝" OA
SDL	1" Flat	1" Flat	1" Flat	1" Flat	N/A
TDL	2½"	2⅝"	N/A	N/A	N/A
Split Finish	Yes	Yes	No	No	No
PERFORMANCE	SERIES 7000	SERIES 8000	SERIES 8100	SERIES 8150	SERIES 9100
DP Structural Rating	C30	C30	C30	C35	N/A
Up to .30 U Value Achievable	No	Yes	Yes	No	No
NFRC Certified	Yes	Yes	Yes	Yes	No
STC Acoustic Rating	Up to 40	Up to 34	Up to 38	Up to 38*	N/A

**Series 8150 STC ratings pending final test results.*

Performance based on 2" Sill and dual glazed testing results. Comparison chart data subject to change without notice. Visit allweatheraa.com for current product information and ratings.

ALL WEATHER | WINDOW AND DOOR FINISHES

All Weather windows and doors feature Class I anodized coatings which are a high-performance finish used for exterior building structures and other products that must withstand continuous outdoor exposure. Class I anodized finishes are more resistant to salt spray and the sea coast as compared to Class II. Custom Kynar paint color matching available for commercial projects.*



CLASS 1 DARK BRONZE ANODIZED

SOPHISTICATED AND TIMELESS, DARK BRONZE FITS IN HOMES WHERE A MORE TRADITIONAL AESTHETIC IS DESIRED.



CLASS 1 CLEAR ANODIZED

SLEEK AND MODERN, THE 'ALUMINUM LOOK' IS BEST SUITED FOR CONTEMPORARY DESIGN TASTES AND STYLES.



WHITE*

AVAILABLE FOR SERIES 8100 AND 8150 DOORS. AN EXCELLENT CHOICE IF YOU ARE MATCHING ALUMINUM DOORS TO VINYL TYPE PROJECTS.

GLASS | ENERGY EFFICIENCY (NFRC)

LOW E (LOW-EMISSION) | CARDINAL CG

Low E is a transparent coating used to minimize the amount of infrared and ultraviolet light that passes through a piece of glass. This coating improves energy performance in windows by reflecting exterior heat during warmer seasons and retaining interior heat during colder seasons.

Cardinal LoE-270 (LoE-270) provides enhanced energy levels of performance with its patented two-layer coating for year-round comfort.

Cardinal LoE-366 (LoE-366) is the ultimate performance glass and delivers the highest levels of year round comfort and energy savings. LoE-366's patented triple-layer coating rejects the sun's heat, provides exceptional fading protection while still letting light stream in. Pair it with argon gas and LoE-189 for maximum energy efficiency.

TINTS

Tinted glass is available in a wide range of colors to meet your visual and energy performance needs. Bronze, Grey, Green and Blue are our most popular options.

LAMINATED

Laminated glass is a safety glass that is two pieces of glass bonded together with a plastic interlayer. This interlayer helps strengthen the glass against impact and, if damage does occur, the plastic will hold the broken shards together limiting the risk of injury from the glass. Laminated glass is also used as a moderate acoustical pane, offering some sound barrier.

OPTIPHON SOUND CONTROL

Pilkington Optiphon™ is a laminated glass that utilizes a special PVB interlayer that enhances sound insulation performance. Using this glass in place of a clear pane can provide excellent sound control with the same benefits as laminated glass.

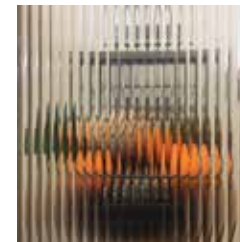
ARGON FILLED

Argon is a colorless and odorless dense gas that helps improve energy performance. Argon gas can be injected between two panes of glass in insulated glass units to achieve better energy ratings.

DECORATIVE



CLEAR



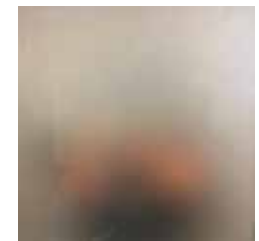
NARROW REED



OBSCURE



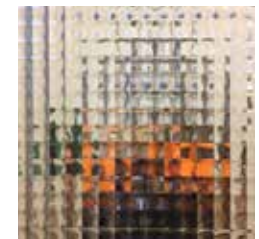
GLUE CHIP



SATIN ETCH



RAIN



CROSS REED





MARK ENGLISH ARCHITECTS | PHOTOGRAPHY TOUR SPACE

